

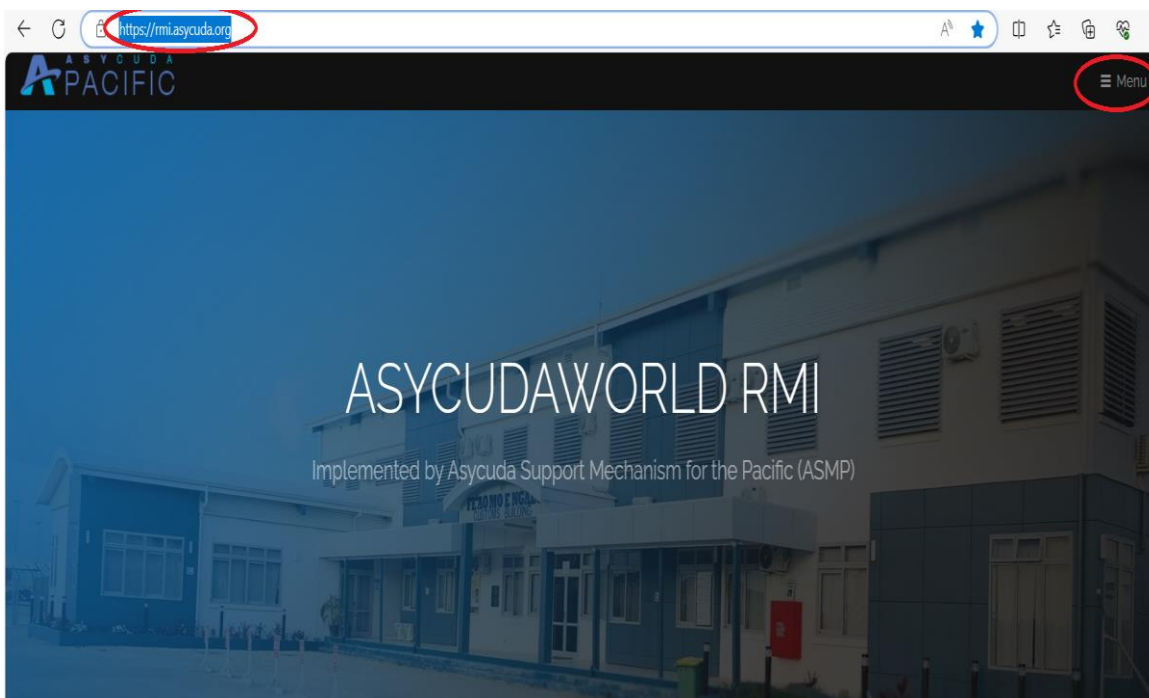


Connecting to ASYCUDAWorld Client

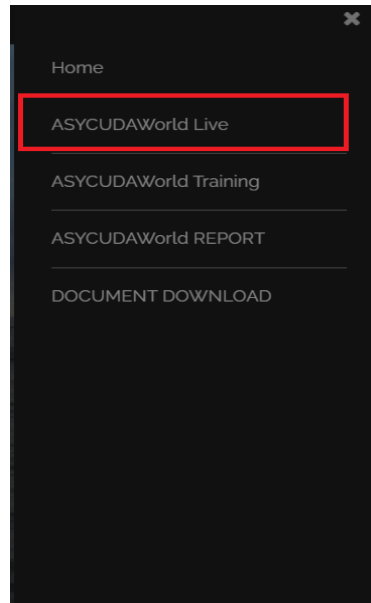
▪ **Note:**

Install the Java software on the Desktop/Laptop using “**Java Installation and Configuration Guide.pdf**” instruction document, prior to proceeding with this guide. The Java software can be downloaded from the <https://rmi.asycuda.org/> document library.

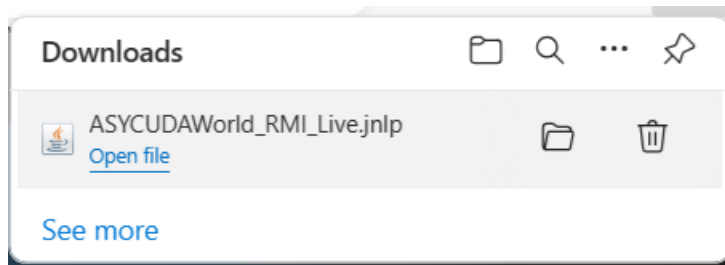
- Type the secured URL <https://rmi.asycuda.org/> in any web browser to;
 - Download documents and
 - Download ASYCUDAWorld jnlp file which can be used to connect to the ASYCUDAWorld client



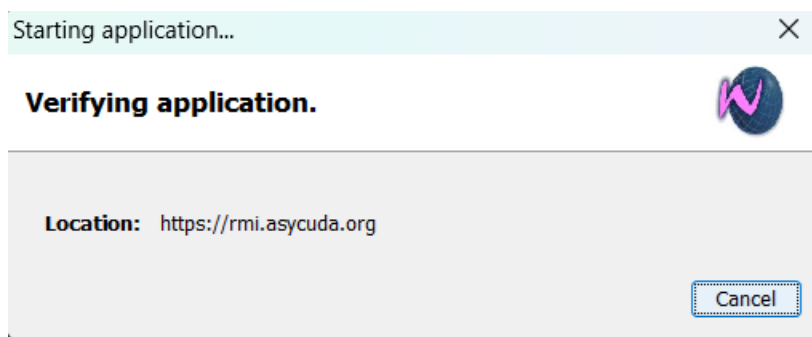
- Press on **ASYCUDAWorld Live** to download the ASYCUDAWorld jnlp file on to the ‘download’ folder of your computer shown in the menu window below
- Press on **DOCUMENT DOWNLOAD** menu item to go to the Document download page.



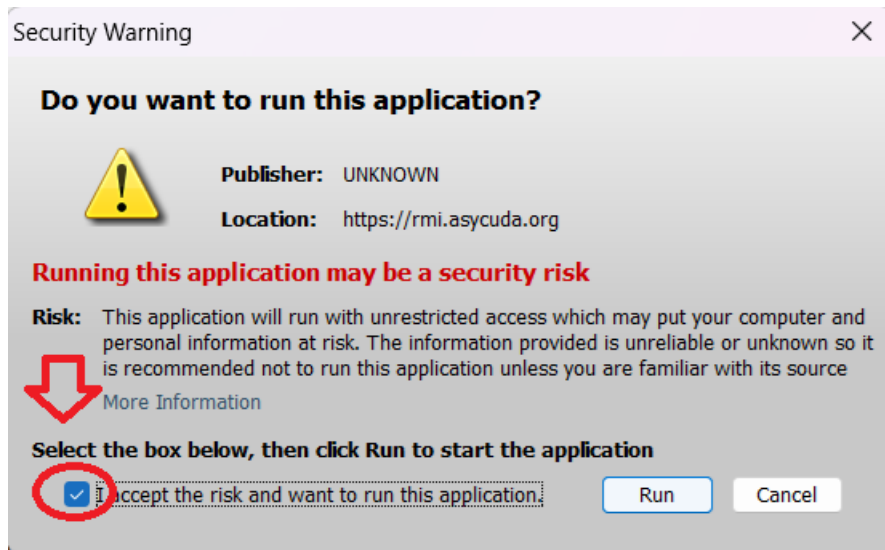
- Press “Open file” on ASYCUDAWorld_RMI_Live.jnlp to obtain the login prompt.



- You will get the windows given below, followed by the security warning.

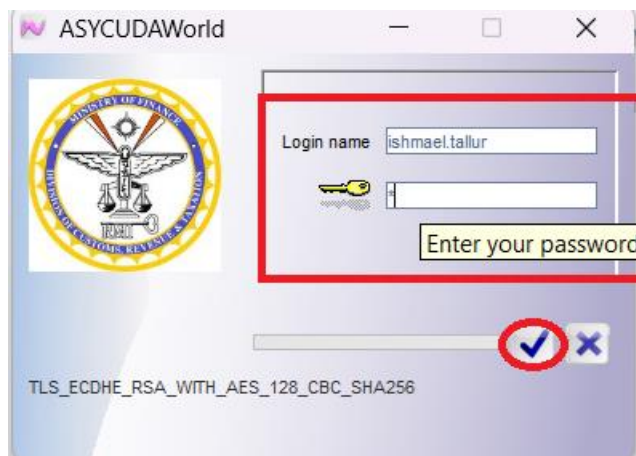


When you get the security warning window (shown below), tick (v) the check box, before clicking “I accept the risk and want to run this application” Run button.





- Use the login name and password provided to login to the ASYCUDAWorld system



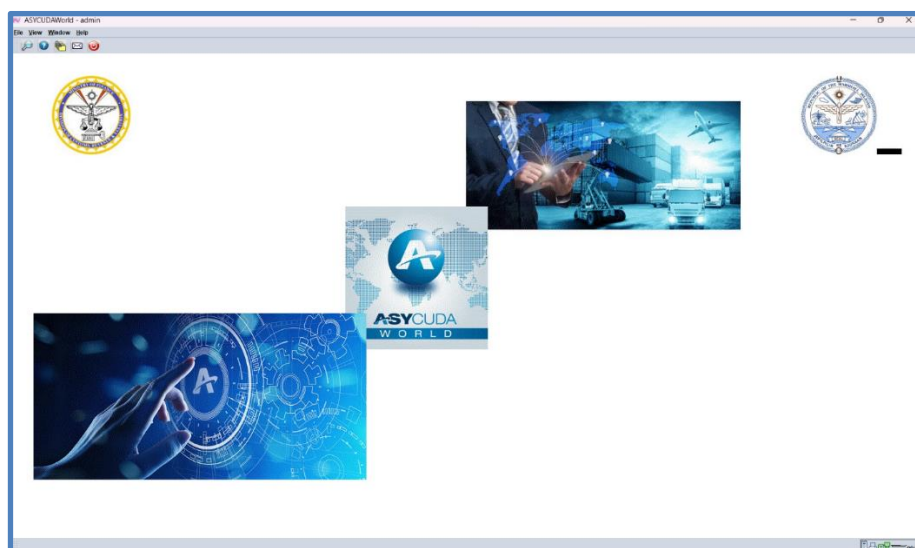
Note:

- ✓ When logging in for the first time, at certain instances, you are requested to change your password.
- ✓ Always use strong a password and memorize. It is advisable to change the password often for security reasons.
- ✓ If you forget your password, the Customs will not be able to find your password and they will only be able to reset your password.
- ✓ You will be accountable for all activities performed in the system using your username. Therefore, **do not disclose your password** to anyone.
- ✓ At the time of logging in, you may get the following windows, based on your user properties, which were set at the time of user creation.

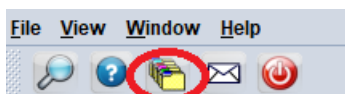




- Once the user name and password is correctly entered, you will be logged into the ASYCUDA client and be able to reach the ASYCUDAWorld Desktop.




- Press  button to reach the ASYCUDA Document library.



Note:

You may create a shortcut on your desktop for accessing ASYCUDAWorld, for your convenience

Copy downloaded  ASYCUDAWorld_RMI_Live.jnlp file in the 'Downloads' folder on to the desktop of the Laptop/Desktop. This way, it can be used as a short cut to connect to the ASYCUDAWorld client (shown below). .



-End-